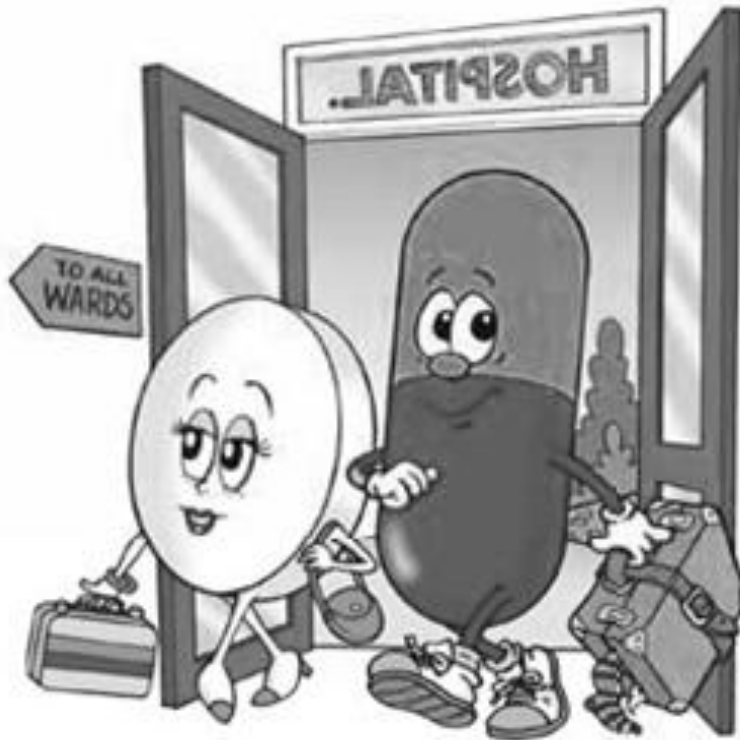


Going into Hospital?

Please take your medicines with you



Introduction

This leaflet explains the importance of bringing all of your medicines that you usually take at home into hospital when you are admitted.

There are several reasons why this is very useful to us:

- To tell us accurately which medicines you are taking
- To enable us to assess the suitability of the medicines that you are taking
- To avoid wasting medicines – we will make sure that you are discharged with enough medicines but that you are not given more than you need
- If your medication is changed, we can make sure that you have the correct medication to go home with

Reference No.

GHPI0928_03_22

Department

Pharmacy

Review due

March 2025

Patient Information

- To help speed up your discharge from hospital
- To save the NHS money which can then be spent on high cost services such as cancer treatments. For example, if we need to re-supply an inhaler which you have at home, it can cost up to £90

What we would like you to bring?



We would like you to bring all the medicines that you take at home in the original labelled containers, including: tablets/capsules, liquids, eye drops, inhalers, creams/ointments, insulin, pill reminder boxes and herbal/over the counter medications.

On admission to the ward

Give all of your medicines to a nurse, who will lock them away in the locker next to your bed.

Your medicines will be assessed by a member of the pharmacy team to check that they are appropriate for use in the hospital. If there is a reason why your medicine is no longer suitable, we will dispose of it safely, otherwise your medicine will be used for you during your hospital stay.

If your supplies run low, we will re-supply more ready for you to take home. We will make sure that you have at least 7 days left of your medication when you leave hospital.

If any new medicines are started during your admission these will be supplied for you to take home.

**Patient
Information**

What if I forget?

You may be asked if a relative/carer can bring your medicines in, if this cannot be done, a small amount of medicine will be provided for you to use while you are an in-patient.

Allergies

It is important that we are aware of any allergies you may have. Before coming into hospital please make sure that you know whether you are allergic to anything and if so what.

We also need to know how you react to the substance, for example if it causes a rash.

On admission to hospital, you will be asked about your allergies and reactions and this will be documented in your patient notes and on your medicine chart.

Any questions?

If you have any questions to do with your medicines please ask a member of the pharmacy team who visit the ward daily or your nurse.

Contact information

Medicines Helpline

Cheltenham General Hospital

Tel: 0300 422 2805

Monday to Friday, 3:00pm to 4:00pm

Gloucestershire Royal Hospital

Tel: 0300 422 6837

Monday to Friday, 10:00am to 11:00am

Content reviewed: March 2022